

# bühnen SPIEGEL

Issue 34 • December 2015

... since 1976  
**Rothlehner**  
working platforms



Rothlehner team Prague/Czech Republic

## Company information

■ **Rothlehner / Lift-Manager**

## DENKA•LIFT

- **DL30 - Our flagship**
- **Further developments**

## GSR

- **B200PX Compact**
- **B230T Comfort X**
- **E140TJV for service provider**
- **10 years of partnership in Germany**
- **Greeting from GSR**

## PB-Lifttechnik

- **New "power scissor" S225-24DS 4x4**
- **Addition to Top 19 series**
- **PB UK in England and Ireland**

## Bluelift

- **NEW: R260C**
- **R220C for Cologne**

## TCA-Lift

- **Falcon-Spider**
- **Designs for narrow access**

## Lift-Manager

- **Diesel engine maintenance**
- **Diesel particulate filter retrofitting**

## Service - Rothlehner Group

- **Service area map**
- **Your direct link**

## News

- **Special solutions for aircraft industry**
- **Europelift**
- **Special equipment**
- **Trade fairs Germany 2016**

## Dear Customer, Dear Bühnenspiegel Reader,

Several weeks prior to the close of the year, it is already foreseeable that the significant annual objectives of the Rothlehner Group will be achieved in 2015.

A € 31 million turnover denotes great trust from our customer in our products, services and especially in our employees.

In our companies in Germany, Austria, Czech Republic, Slovakia and Poland, we have to handle these different markets in an extremely differentiated manner. Different key areas characterise the profiles of our respective companies.

In the Czech Republic, for example, the focus has always been on the development and production of special truck-mounted variants. Booms and outrigger systems from GSR form the basis of a series of market-specific solutions, however, Bronto truck-mounted superstructures or MOOG bridge inspection technology are also extremely well-known here.

Another focal point is provided through our intensive cooperation with Haulotte in Sales and Service.



Team Prague/Czech Republic

**DENKA•LIFT** continues to play an increasingly important role as Rothlehner own-brand products.

In addition to marketing in several new-machine core markets, trading with used machines from various manufacturers also has great significance in the Czech Republic.

From our locations in Prague and Olomouce, 22 of our around 50 employees take care of maintenance, repair and mobile service of the working platforms of our customers.

In the IPAF training centre in Prague, operators and instructors are continually being trained.



Three new DENKA machines for long-standing Czech customers

**Team and confidence building also includes company-internal, cross-border meeting and events.**

Following several organisational changes in our Polish company, invitations were recently issued to celebrate in Skawina / Krakow.

Personal contacts were maintained with numerous representatives from our affiliated companies, experiences were exchanged and mutual objectives discussed, whilst enjoying polish specialities.



A further event will take place in Jänkendorf at the beginning of December.



The start-up in our new premises will be inaugurated with a Lift-Manager service meeting, a two-day product training course and subsequently our Christmas party.



Extension construction completed after 7 months

With the completion of the extension construction in Jänkendorf, more than 1,000m<sup>2</sup> of workshop space is now available for work platform service, as well as an extended parts warehouse, new office space and a new training facilities. The "old" round hall will serve the assembly of our **DENKA•LIFT** new machines in the future.

The construction types Junior12, DK25, DL28N and DL15/30 will be produced here. The other type series DK18, DL18/21 and Narrow DL19/22N will continue to be produced in Massing.

We look back on an eventful year, and hope that you will use many of our newly created capacities, because we have created these for you and for your benefit!

As the year draws to a close, we wish you success in your business, and moreover, a Merry Christmas and Happy New Year 2016!

*Manfred Rothlehner*

Manfred Rothlehner  
Rothlehner Arbeitsbühnen GmbH

*Roland Jäkel*

Roland Jäkel  
Lift-Manager GmbH



## DENKA•LIFT DL30



In service at the SAP Arena with a working height of 2m to 30



### Optional:

#### Lowerable axles

The clearance height can be reduced to less than 2 m thanks to lowerable axles.



### Optional: Hybrid drive

#### Diesel engine 5.2 KW

#### "Silent Pack" with

#### charging generator 230 V

With 21 litre tank and start/stop function from the cage



### Optional:

#### High-power batteries

#### 8 pieces 6-volt 215Ah/5h

#### instead of the standard

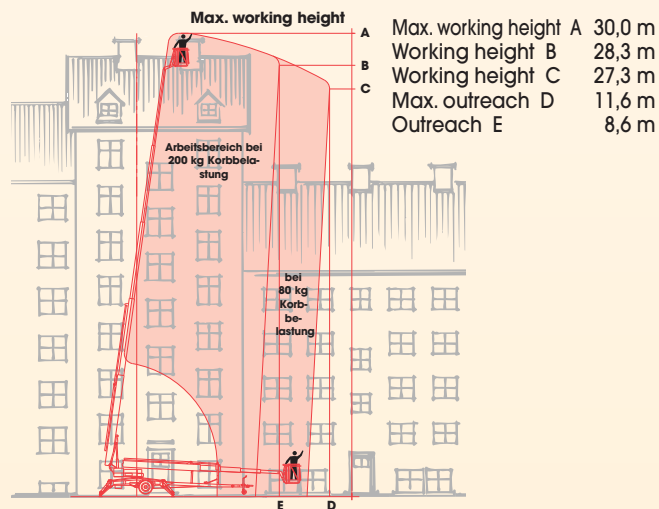
#### 190Ah/5h

## Our flagship

Our highest trailer-mounted working platform with a working height of 30 m and 3,500 kg total weight.

**Hybrid drive**, compact dimensions of 1.72 m width and a minimum clearance height of 1.95 m!

As a result, the **DL30** can be deployed in both indoor and outdoor applications - it has proven itself for years with crafts enterprises, industry, rental companies and public facilities.



### Standard:

#### Drive function from the cage

All DL25 and DL30 are equipped with a drive function which can be operated from the cage as standard. Unfolds automatically for lift operations.



Junior 12



DK 18



DL 18/21



DK 25



DL 25/30



Narrow DL 19/22 N



Narrow DL 25/28 N

## DENKA•LIFT further developments

In the course of modernisation measures, the relay control mechanism used for **DENKA•LIFTs** up until now will be replaced by an intelligent **TTControl** unit.



In combination with efficiency-optimised **Fronius charging technology** and modern tilt and monitoring sensors, the reliability of these machines will be increased even further.

The battery service life and energy consumption are optimised by the charging technology specially adapted by Fronius.



The popular, simple operation remains identical.

A display allows an extremely simplified and quicker fault search and rectification. Adjustment work is completed with a few pushes of a button without the use of a computer.





## New: GSR B200PX Compact

The new **B200PX** was presented to the public for the first time at the Platformers Days in Hohenroda. This new articulated telescopic working platform has been completely newly developed following an intensive dialogue with internationally-operating rental companies.

The result of this dialogue, and the basis for the development work were the following main requirements:

- 20 m working height
- 300 kg basket load
- Simple operation
- Minimal overhangs, optimised weight distribution
- Vehicle-wide, vertical support on a Nissan Cabstar / Renault Maxity



### Dear Buehnerspiegel Readers.

GSR has recently launched its latest models at the Platformers' Days Show in Hohenroda and at the Maxpo in Helsinki: the new B200PX and the new B230T on Mercedes Sprinter.

Both models are available on Nissan Cabstar (Renault version too) and on Mercedes Sprinter and anticipate the new E6 evolution. It is clear that some of the developments in the technology of the truck-mounted platforms are also due to the new engine-emission laws, which make the vehicles heavier. One may consider that - on average - an increase of 30 kg in the weight of a vehicle correspond to 1 m working height of an aerial platform. The challenge for the manufacturers is to produce machines that are anyway simple and built to last.

Fortunately the outlook on 2016 is very positive and we are all looking forward to the great spring meeting in Muenchen where GSR and Rothlehner may have yet more surprises to show. Wishing you all a Happy Year ending,

Piero Palmieri  
GSR Spa

## New: B230T Comfort X



As already announced in the last Buehnerspiegel, the **B230T** is now available also on a Mercedes Sprinter. On the one hand, the new, compact intermediate frames with **variable H-outriggers** enable a wide deployment spectrum of this 22.5 m platform, and on the other hand, they display a particularly elegant integration of this into the vehicle concept.

## GSR E140TJV for service provider

Recently, an **E140TJV** on a Ford Transit van was delivered in the Czech Republic. In the future, this machine -equipped with an extensive range of special equipment- will undertake tunnel maintenance for the D8 Prague - Dresden motorway.



Partnership with GSR in  
Czech Republic for 17 years.



## 10 years of partnership with GSR

For more than 10 years, Rothlehner Arbeitsbuehnen GmbH has sold truck-mounted working platforms made by the North Italian manufacturer **GSR**. Within the scope of the Platformers Days in Hohenroda this year, GSR presented a gift to Rothlehner and Lift-



Manager employees to thank their companies for 10 years of successful cooperation.



l. to r.: Luca Santolini (GSR), Peter Stelzer and Stephan Opfer (Rothlehner), Piero Palmieri (GSR), Manuel Miller and Sven Illgen (Rothlehner), Roland Jäkel (Lift-Manager)



## A new "power scissor" extends the PB product range

At great heights, with much space and enormous power: Amongst other things, the new scissor platform **S225-24DS 4x4** from PB convinces with these three attributes. Deployments in the upper realms do not present a problem with a **working height of 22.30 m**. The impressive **mega platform with a max. 7.20 x 2.36 m** is approved for four persons, and equipped for a **capacity of 750 kg**, it provides a great deal of scope for transporting heavy materials and tools.



The new S225-24DS  
4x4 from PB

Whether indoors on an industrial site or working on high external facades:

Driven by a **powerful Deutz diesel engine**, the **PB S225-24DS 4x4** defies almost any ground thanks to its **standard four-wheel drive, differential lock** and **outrigger system**.

Within seconds and at the push of a button, the machine levels out uneven surfaces and provides a bonus for stability which again increases the deployment possibilities many times over.



## PB TOP 19 series receives a new addition

Over many years, the **PB TOP 19 series** has convinced amongst the 4x4 multi-talents on the work platform market, and has sustainably established itself. In this process, a constructive exchange with hire companies and users has been sought and maintained, whereby new wishes and requirements have arisen.

**The question in many discussions was:** Is it possible to have more cost-effective **TOP19 models without 4x4 drive**, yet with the same high-performance attributes such as high capacity, large platform, powerful drive unit and robust tyres?

PB is now fulfilling these ideas as well as possible and extending its scissor range of the TOP 19 series.

The modular structure of this series of models permits three different chassis types:

- **Completely rigid 2-wheel drive** e.g. for indoor deployments in industrial applications
- **2-wheel drive with a front swing axle** e.g. for flexible construction site deployments both indoors and outdoors
- **Proven 4x4 all-wheel drive with front swing axle / rear auto-levelling axle** as an absolute all-rounder machine, also for difficult off-road deployments

Combined with five different scissor mechanisms with **12.80 - 18.10 m working heights** and **500 - 900 kg platform capacity**, a total of **15 different model variants of the Top 19 series** from PB have emerged. As a result, PB provides innovative and flexible solutions for their customers with unique performance packages depending on their requirements profile.



Examples of TOP 19  
models from PB

## PB UK starts in England und Ireland

Since 1st October 2015, PB has pushed sales in England and Ireland, and for this purpose has strengthened their team with Alan Russon who from now on will be the contact partner and representative for PB in both of these markets. Alan and his team are responsible for presenting the PB brand and products extensively on the UK market, and for promoting sales and providing service for PB platforms here.

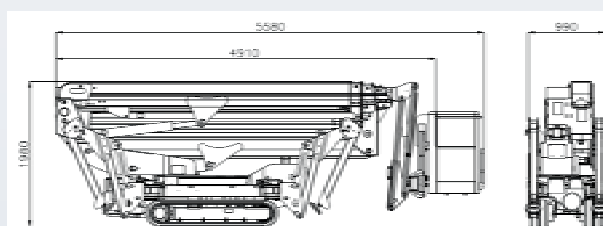
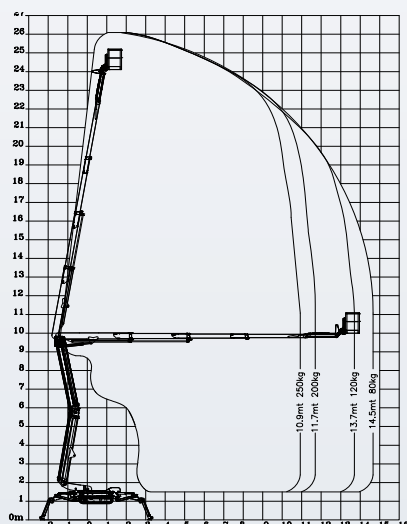
The complete PB team looks forward to a successful cooperation!



Alan Russon has a great deal of experience of the local market for the sales and service of scissor platforms, from mini-scissors to large-scale platforms.

## NEW: Bluelift R260C

The new crawler working platform Bluelift **R260C** has been developed based on the well-known **R220C**. The now 4-stage design articulated telescopic boom achieves a **working height of 26 m** and **14.5 m horizontal outreach** at 80 kg. The complete control unit and the efficient drive technology has been adopted unchanged from the base model. A low **net weight of only 3350 kg**, which is unrivalled in this category, could be realised thanks to minimal modifications to the chassis. The dimensions also set new records, for example, a minimal **total length of only 4.91 m**.



## Cologne Underground receives two Bluelift R220C

Cologne transportation company (KVB) has taken delivery of the first two fully insulated Bluelift **R220C** for the new North-South metro tunnel in the German city of Cologne. These crawler machines will be used for cleaning and maintenance work in the Heumarkt underground station and in other areas.



One of the machines had to be transported with the help of a rail vehicle into the lower-located station, dismantled into parts and then lifted to the floor above with the help of a crane. The machine was then assembled again within a tight time frame by a team from Rothlehner and Lift-Manager.



## Falcon Spider – Design For Narrow Access

The design of The Falcon Spider Lift is extremely compact / narrow in its stowed position, allowing it to pass through a standard single door opening of only 0,8 m width and 1,98 m height with the Falcon Spider Lift **FS290 - FS320**, which is the most compact / narrow of the Falcon Spider Lifts.



The compact / narrow design of The Falcon Spider Lift allows access to job sites where entrance space is limited, and height and reach required.

The table below shows The Falcon Spider Lift measurements in transport position

Typ:	FS290	FS320	FS330Z	FS370	FS420	FS370C	FS420C	FS520C
Width:	0,80 m	0,80 m	1,10 m	0,90 m	0,90 m	1,22 m	1,22 m	1,25 m
Height:	1,98 m	1,98 m	2,27 m	1,98 m	1,98 m	2,10 m	2,10 m	2,10 m

Atriums, hotels, shopping centers, facility management sites, office buildings and airports etc., are just some of the places where The Falcon Spider Lifts are in operation world-wide.



## Service topic: Diesel engines in aerial working platforms

Diesel engines are often installed especially in self-propelled and large-scale scissor platforms. "These engines in aerial working platforms are often neglected on construction sites", according to one of the service technicians of Lift-Manager GmbH who elaborates: "The machine users undoubtedly pay regular attention to the maintenance intervals of their cars, but the platforms are always just started up and fuel filled in, and this can be expensive in the long run"

Engine damage is indeed seldom but does happen, and it is often the result of insufficient maintenance or deferred maintenance intervals.

Naturally, Lift-Manager also provides maintenance and repair services for engines in elevating work platforms.



Retrofitted  
particulate filter

A further area of our service provision for diesel engines is the retrofitting of diesel particulate filters. The legislative framework conditions for emissions on construction sites are becoming increasingly strict, and diesel particulate filters are already stipulated today in different areas.

Different solutions tailored to respective needs can be retrofitted in various machine types, such as changeable filters which are washable with high-pressure cleaners or permanently installed filters with regeneration.



If you are interested, simply use the answer fax or ask directly at Lift-Manager for an offer.



**Work platform service  
within the  
Rothlehner Group**

**Your direct link to service  
in Germany**

www.**Lift-Manager**.com  
working platform-Service



**in Austria, Poland,  
Czech Republic, Slovakia**

www.**Rothlehner**.com  
working platforms



Reg.-Nr.: Q1 0497064



**S** Mobile Service  
**W** Workshop

## Special solutions for the aircraft industry

Rothlehner special solutions have already been implemented for numerous projects in the aircraft industry, and were also presented to an interested professional audience at the InterAirport specialist trade fair in Munich (6th - 9th October 2015).



In particular, great interest was shown in special solutions with ultrasound anti-collision switch-off systems for scissor and self-propelled technology which are also deployed at one of the world's largest aircraft service providers amongst others.

## Special equipment - Eurolift

Compact dimensions and an extremely interesting price-performance ratio distinguish the Eurolifts.

A **TM15T** was recently delivered to a crafts enterprise in a special green colour and with additional generators.

As further special equipment for these trailer-mounted platforms, a glass fibre basket is also available - just as in the **TM13G** recently handed over to a local authority in a municipal orange colour.



## Trade fairs

### Farbe, Ausbau und Fassade (Painting, Facade & Design)

Munich from 02. - 05.03.2016

Hall A1, Stand A1.328



### bauma 2016

Munich from 11. - 17.04.2016

You can find us again in the outdoor area F1003/3 with a joint stand with our main suppliers



Visitor tickets for both fairs available from January 2016!

## Ansprechpartner Ausland:

Austria, Slovenia, Croatia  
**Bernhard Spörk**

Feldweg 3  
A-8055 Graz-Neuseiersberg  
Tel. +43 664 3364030  
Fax +43 316 291045  
info@rothlehner.at  
www.rothlehner.at

Czech Republic  
**Zbynek Tomásek**

Mezi uvozy 2512/2a  
CZ-19300 Praha 9  
Tel. +420 2 81090590  
Fax +420 2 81090596  
info@rothlehner.cz  
www.rothlehner.cz

Slowakia  
**Ladislav Kajan**

Novozamocka 102  
SK-949 01 Nitra  
Tel. +421 37 6525520  
Fax +421 37 6525522  
info@rothlehner.sk  
www.rothlehner.sk

Poland

**Manfred Rothlehner**

ul. Energetyków 4  
PL-32-050 Skawina  
Tel. +48 12 2675811  
Fax +48 12 2675811  
info@rothlehner.pl  
www.rothlehner.pl

## Rothlehner working-platforms

### Product Range

- Trailer-mounted up to 30m
- Truck-mounted
- Scissor-technology and self-propelled
- Specialised narrow equipment
- Crawler mounted
- Used equipment

### Services

- Consulting
- On-site customer service
- Spare part service
- Oil filtration, bio-oil
- General maintenance
- Project planning
- Finance
- Insurance
- IPAF -training centre

### Location

- 15 x Germany
- Austria
- Czech Republic, Slovakia
- Poland

Everything under one roof

### Impressum:

Editor and head office:  
**Rothlehner Arbeitsbühnen GmbH**

Mühlenweg 1  
D-84323 Massing-Oberdietfurt  
Tel. 0 87 24 / 96 01-0  
Fax: 0 87 24 / 96 01 -12  
info@rothlehner.de  
www.rothlehner.de

**Layout:**  
Franz Fürstberger  
LOGO! Design & mehr ...

**Redaktion:**  
Manuel Miller, Fred Rothlehner